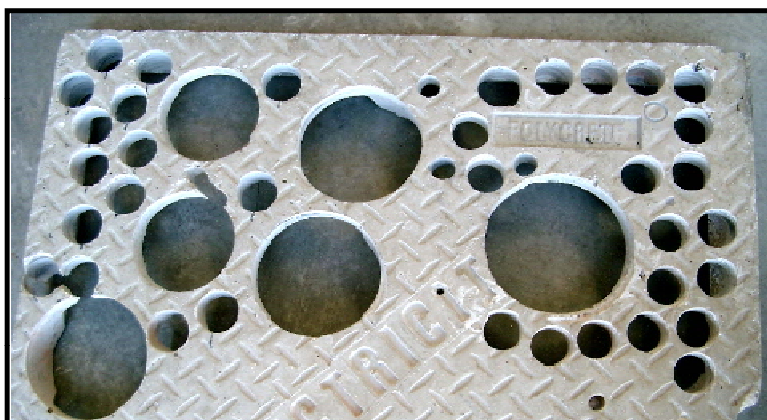


SINTERED DIAMOND HOLE SAWS

Code	Size
TT-DDV-5	5mm
TT-DDV-6	6mm
TT-DDV-8	8mm
TT-DDV-10	10mm
TT-DDV-12	12mm
TT-DHSS20	20mm
TT-DHSS25	25mm
TT-DHSS30	30mm
TT-DHSS32	32mm
TT-DHSS35	35mm
TT-DHSS38	38mm
TT-DHSS40	40mm
TT-DHSS45	45mm
TT-DHSS50	50mm
TT-DHSS55	55mm
TT-DHSS60	60mm
TT-DHSS63	63mm
TT-DHSS65	65mm
TT-DHSS70	70mm
TT-DHSS75	75mm
TT-DHSS80	80mm
TT-DHSS85	85mm
TT-DHSS87	87mm
TT-DHSS89	89mm
TT-DHSS95	95mm
TT-DHSS100	100mm

Prices do NOT include 10% GST



Sintered Diamond holesaws are designed for cutting porcelain & ceramic tiles, Natural and composite stone & Polycrete products. These premium quality holesaws will give optimum performance & long life. To extend the life of the blades, it is recommended that water is used while drilling granite, porcelain & ceramic tiles

